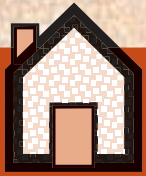


Tambour

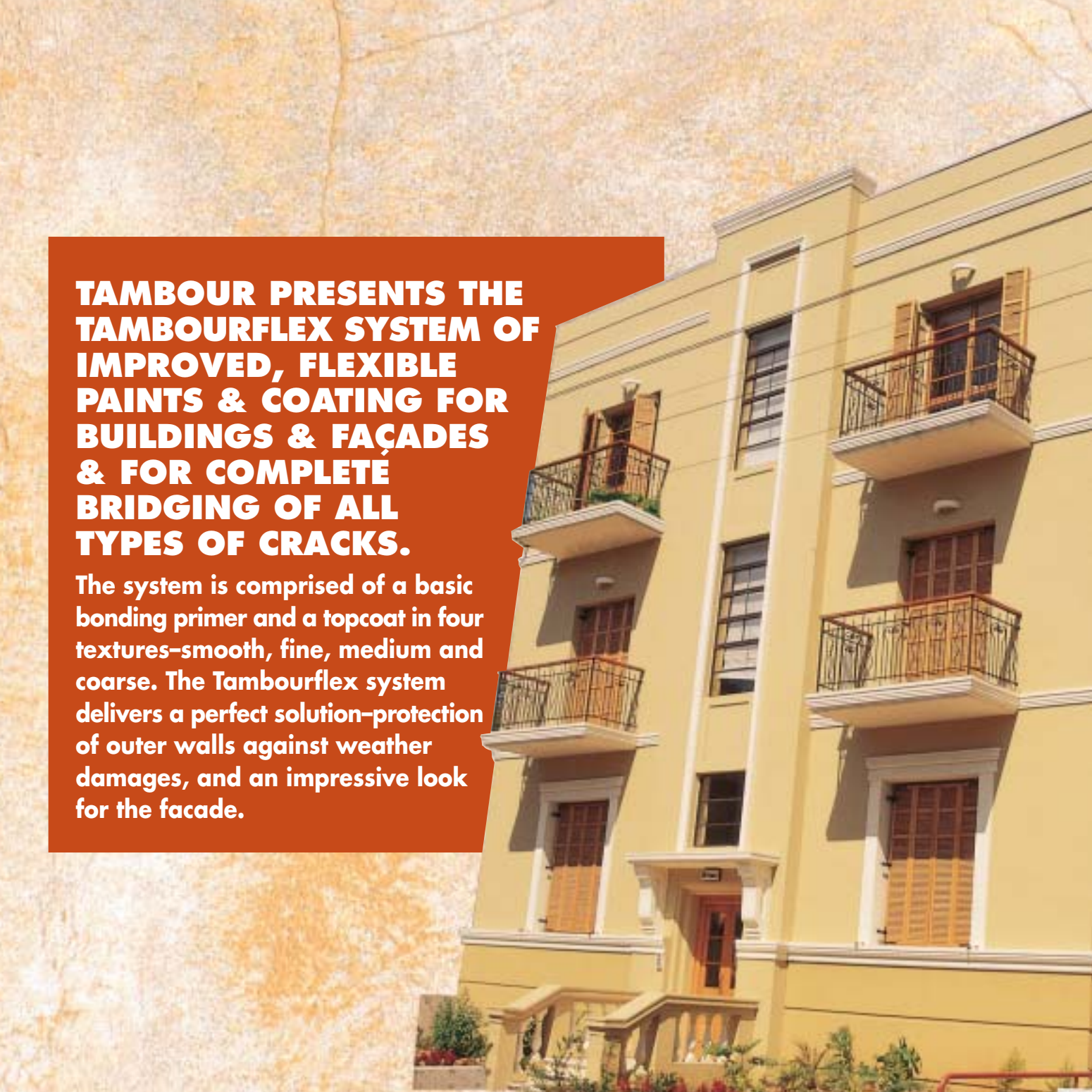
**New in the
professional series:**



TAMBOURFLEX

A flexible,
superior paint system
for complete bridging
of cracks in external walls



The image features a multi-story building with a light yellow facade, white window frames, and balconies with black metal railings. The building is set against a background of a wall with a prominent, irregular crack pattern in shades of yellow and orange. A dark red banner is overlaid on the left side of the image, containing white text.

**TAMBOUR PRESENTS THE
TAMBOURFLEX SYSTEM OF
IMPROVED, FLEXIBLE
PAINTS & COATING FOR
BUILDINGS & FAÇADES
& FOR COMPLETE
BRIDGING OF ALL
TYPES OF CRACKS.**

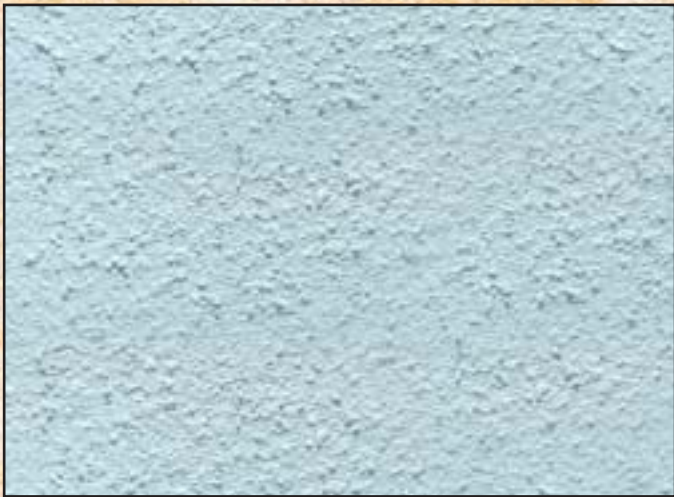
The system is comprised of a basic bonding primer and a topcoat in four textures—smooth, fine, medium and coarse. The Tambourflex system delivers a perfect solution—protection of outer walls against weather damages, and an impressive look for the facade.



Smooth texture 10



Fine texture 30



Medium texture 50



Coarse texture 90

Why are there cracks?

Cracks in buildings, particularly in their façade, arise for numerous reasons:

■ Incorrect composition of concrete and plaster during casting ■ Rapid loss of water in the fresh concrete and plaster ■ Insufficient irrigation of the concrete surface ■ Surplus water in the fresh concrete, which reduces the concentration of the surface cement and causes shrinkage ■ Corrosion of concrete support columns ■ Differences in the pace of thermal insulation of the various construction elements ■ Differences in stress contact points of the various materials ■ Receding soil ■ Dimensional changes and design flaws in relation to building foundations ■ Types of cracks: hairline and net, plaster and structural.

What are the results of cracks?

Cracks create an open channel for water and hazardous materials, that can penetrate to the building's interior and cause severe damage to the building and its exterior appearance.

Application

- Before application allow the concrete and plaster to settle for at least 28 days.
- Bonding primer (by roller or airless spray):** dilute with at most 30% turpentine at 6-8 sq. meters per liter, depending on the wall's absorption, and allow to dry for 4 hours before painting with Tambourflex.
- Painting with Tambourflex*: paint by kg per square meter according to Israeli Standard 1731:**

Desired Texture Type of crack	Smooth Texture (10)	Fine Texture (30)	Medium Texture (50)	Coarse Texture (90)
Hairline and plaster cracks up to 0.5mm	500 gr/sqm minimum	700 gr/sqm minimum	1000 gr/sqm minimum	1300 gr/sqm minimum
Structural active cracks up to 2mm	800 gr/sqm	1500 gr/sqm	1800 gr/sqm	1800 gr/sqm

*Note:

When the building is old and has active cracks of 1 to 2mm, we recommend the following:

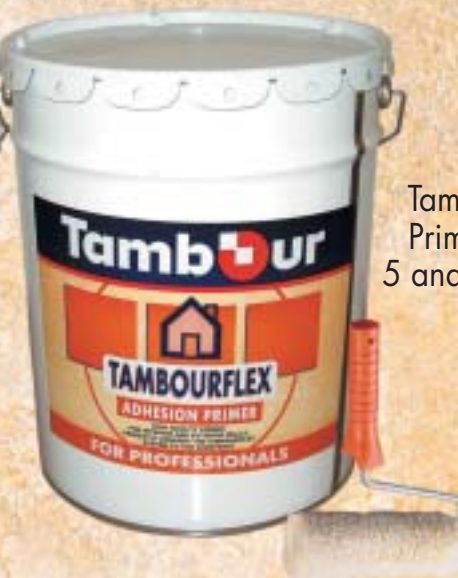
- Before using the bonding primer, remove loose and peeling pieces and any foreign material from the crack.
- Paint with bonding primer as stated above in para.b.
- Use Elastic Filler (cat.no. 737-453) according to instructions of the packaging and wait 24 hours.
Note: In cases of holes and deep cracks, first fill with Filler Putty (cat. no. 737-454) and then with Elastic Filler (cat. no. 737-453).
- Paint one layer of 400 gr/sqm of Tambourflex Smooth Texture 10 over the repairs and then paint the entire wall according to instructions.



TAMBOURFLEX SYSTEM

- **The best and most efficient solution for bridging cracks.**
- **Ideal for new walls and for renovating old buildings.**
- **Highest level of bridging according to Israeli and European standards.**
- **Maximum elasticity over extended period.**
- **Withstands severe weather conditions and UV radiation over long term.**
- **Available in white and a spectrum of 1000 shades from the Tambourmix fan-deck.**
- **Environmentally friendly; has “green” tag.**
- **Easy application with roller or airless spray.**

Tambourflex top
paint is available
in 22 kg containers



Tambourflex Bonding
Primer is available in
5 and 18 liter containers



Detailed application instructions
on packaging

Tambour

TAMBOUR LTD • PAINT AND CHEMICAL INDUSTRIES

6 Hagavish st. Sapir Industrial Zone, P.O.B. 8488 Netanya 42504, ISRAEL
www.tambourpaints.com, Fax:+972-9-8925515, E-mail: export@tambour.co.il