



NEW YORK



TEL AVIV



TO



Paint Effects

Metallic Suede Glittering Metallic Suede



Fine Roughened
Metallic Effect

Glittering Metallic
Effect

Metallic Suede

Fine Roughened Metallic Effect



Metallic Suede for Interior Walls



MSU 814 Zink Gray



MSU 813 Grayish Brown



MSU 812 Iron Gray



MSU 811 Moon Gray



MSU 818 Golden Sand



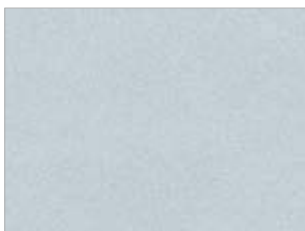
MSU 817 Refined Copper



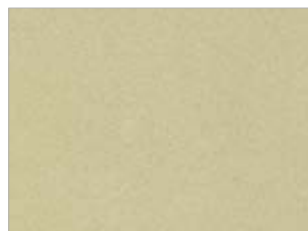
MSU 816 Reddish Copper



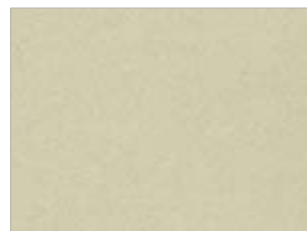
MSU 815 Copper Gray



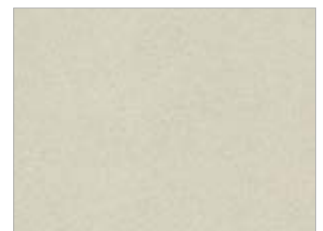
MSU 823 Bluish Tourmaline



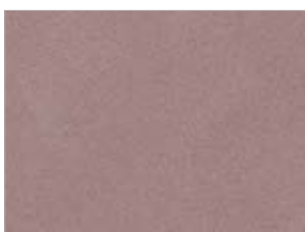
MSU 821 Quartz Green



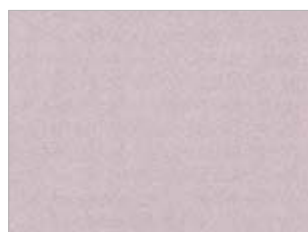
MSU 820 Greenish Tourmaline



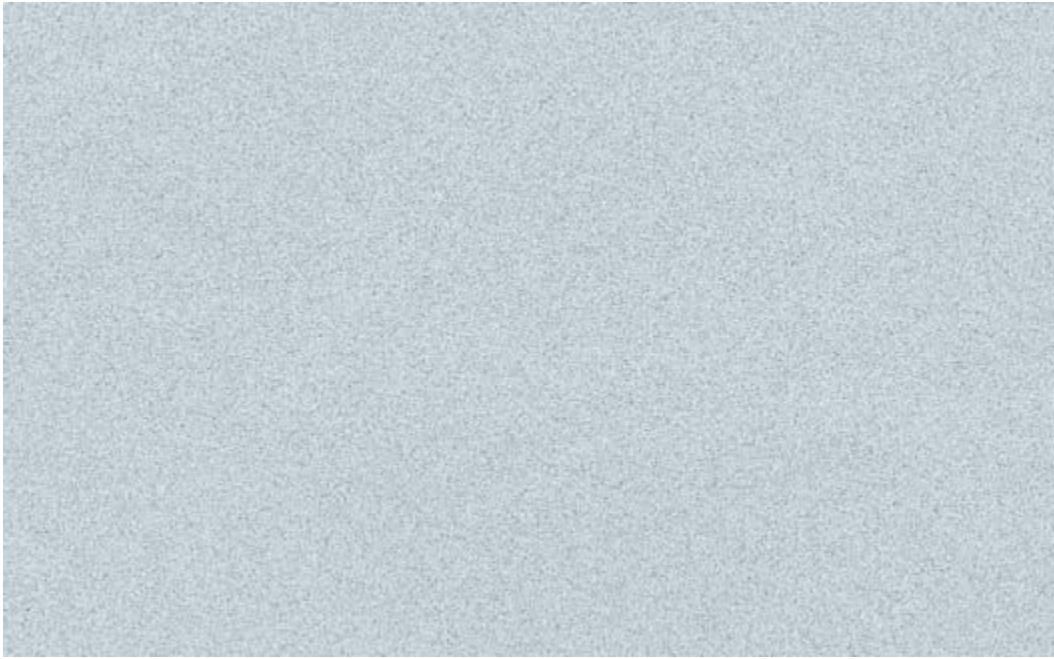
MSU 819 Jade Stone



MSU 825 Purplish Silicate



MSU 824 Purplish Amethyst



Example Application: Metallic Suede in the shade of MSU 823

Metallic Suede for Exterior Walls



FSU 914 Rusty Red



FSU 913 Reddish Beryl



FSU 912 Coal Gray



FSU 911 Grayish Lead



FSU 918 Malecite Blue



FSU 917 Bluish Gray



FSU 916 Emerald Green



FSU 915 Green Aventurine



FSU 920 Bluish Violet



FSU 919 Purplish Quartz





Glittering Metallic Suede

Fine Roughened Metallic Effect



Glittering Metallic Suede for Interior Walls



GSU514 Zink Gray



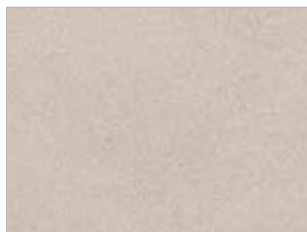
GSU513 Grayish Brown



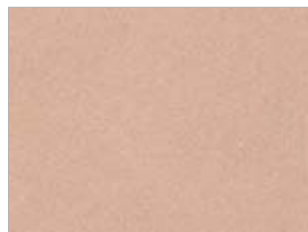
GSU512 Iron Gray



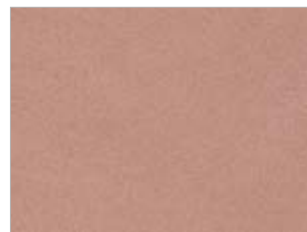
GSU511 Moon Gray



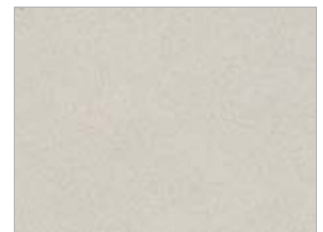
GSU518 Golden Sand



GSU517 Refined Copper



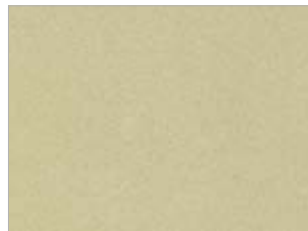
GSU516 Reddish Copper



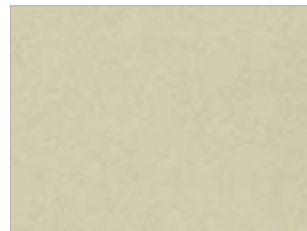
GSU515 Copper Gray



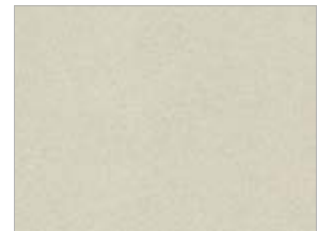
GSU522 Green Slate



GSU521 Green Quartz



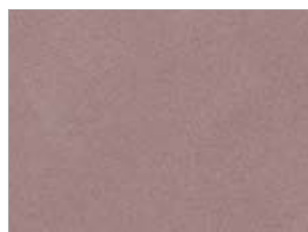
GSU520 Greenish Tourmaline



GSU519 Jade Stone



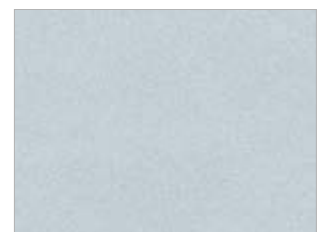
GSU526 Malecite Blue



GSU525 Purplish Silicate



GSU524 Purplish Amethyst



GSU523 Bluish Tourmaline



GSU530 Purplish Amethyst



GSU529 Reddish Cobalt



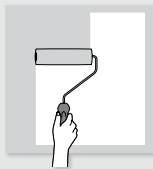
GSU528 Purplish Mica



GSU527 Golden Topaz



Metallic Suede/ Glittering Metallic Suede Application Method:



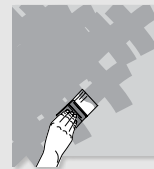
Stage 1

Verify that the wall is clean and smooth. Apply a quartz primer in the nearest shade to the Metallic Suede shade you chose.



Stage 2

Apply two coats of Metallic Suede, using a roller with clipped fibers. Allow to dry for one hour between the coats. The obtained result at this stage is not the final look. The Suede effect is obtained after applying the third coat, using a brush.



Stage 3

Stir the paint thoroughly. Dip a 3" or a 4" brush in the Metallic Suede paint and apply a small amount of paint on the wall in wide diagonal movements.

Continue to apply and blur the borders to erase any single diagonal lines.



It is recommended to read the technical sheet of the product at Tambour website www.tambourpaints.com

www.tambourpaints.com

Tambour Ltd., P.O. Box 8488, Netania South Industrial Zone 42504.



Tambour encourages green building

Tambour offers a wide range of products for walls, wood and metal, displaying the green label of the Standards Institute



YOUR IMAGINATION. OUR PAINT.

